

## FORT MYERS BEACH HARBOR LEE COUNTY, FLORIDA FEBRUARY HYDRO EXAM SURVEY FY21 11 & 12-FOOT PROJECT

### SURVEY NOTES

1. REFER TO SURVEY NO. 21-092.
  2. DEPTHS DEPICTED BY THIS SURVEY ARE REFERENCED TO MEAN LOWER LOW WATER (MLLW) OF THE 1983-2001 TIDAL EPOCH, AS REPORTED BY THE NATIONAL OCEANIC AND ATMOSPHERIC ADMINISTRATION (NOAA). NOAA'S VDATUM MODEL WAS USED AND CALIBRATED TO THE PUBLISHED MLLW HEIGHT OF THE BENCHMARK ASSOCIATED WITH THE TIDE GAUGE SITE SPECIFIED BELOW:  
  
NOAA TIDAL STATION 872-5366 (PID: AD1372) FOR ALL CUTS.
  3. TIDAL REDUCTIONS WERE OBTAINED UTILIZING A REAL-TIME KINEMATIC (RTK) GPS AND REFERENCED TO MLLW UTILIZING A HYPACK KINEMATIC TIDE DATUM (KTD) MODEL. KTD FILE NAME IS: "SPC-FL-WEST-2010-12-07.KTD".
  4. ALL ELEVATIONS ARE BELOW THE CHART DATUM UNLESS PRECEDED BY A (+) SIGN.
  5. PLANE COORDINATES ARE BASED ON THE TRANSVERSE MERCATOR PROJECTION FOR THE WEST ZONE OF FLORIDA AND REFERENCED TO NORTH AMERICAN DATUM OF 1983 (NAD83).
  6. ALL STATIONING REFERS TO THE CENTERLINE OF THE CHANNEL.
  7. THIS SURVEY WAS PERFORMED USING REAL-TIME KINEMATIC (RTK) GPS POSITIONING WITH THE FOLLOWING REFERENCE BASE LOCATIONS:  
  
REFERENCE BASE LOCATED AT "STALEY" (PID: BBCJ30)  
TIDE STAFF SET FROM "872 5366 TIDAL 2" (PID: AD1372)  
  
VERTICAL MEASUREMENTS WERE MADE USING AN EDGETECH 6205 COMBINATION SIDESCAN AND MULTI-BEAM. ALL SOUNDINGS SHOWN ARE IN HIGH FREQUENCY.
- | VESSEL | DATE OF SURVEY | CUT        |
|--------|----------------|------------|
| SB-44  | 17 FEB 2021    | CUTS 1 & 2 |
8. AIDS TO NAVIGATION WERE LOCATED DURING THIS SURVEY.
  9. THE INFORMATION DEPICTED ON THIS MAP REPRESENTS THE RESULTS OF SURVEYS MADE ON THE DATES INDICATED ABOVE AND CAN ONLY BE CONSIDERED AS INDICATING THE GENERAL CONDITIONS AT THAT TIME. THIS CHART IS SOLELY FOR THE DISTRIBUTION OF AVAILABLE DEPTHS AT THE TIME OF THE SURVEY.
  10. SURVEY ACCURACY PERFORMANCE STANDARDS, QUALITY CONTROL, AND QUALITY ASSURANCE REQUIREMENTS WERE FOLLOWED DURING THIS SURVEY IN ACCORDANCE WITH USACE EM 1110-2-1003, HYDROGRAPHIC SURVEYING, 30 NOV 2013.

LEGEND	
△	MONUMENT
▽	LIGHTED BEACON
■	GREEN DAYBEACON
▲	RED DAYBEACON
⬢	RED LIGHTED BUOY
⬤	GREEN LIGHTED BUOY
⬢	CAN BUOY
⊙	NUN BUOY
⊕	TIDE STAFF
8	PROJECT DEPTH

US Army Corps of Engineers  
 Jacksonville District  
**SAFETY ON THIS JOB DEPENDS ON YOU**

---

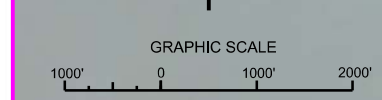
**FEBRUARY HYDROGRAPHIC EXAM SURVEY FY21  
11 & 12-FOOT PROJECT**  
 INDEX, LOCATION AND VICINITY MAP

---

Scale: AS SHOWN  
 Drawing no.  
1 / 3

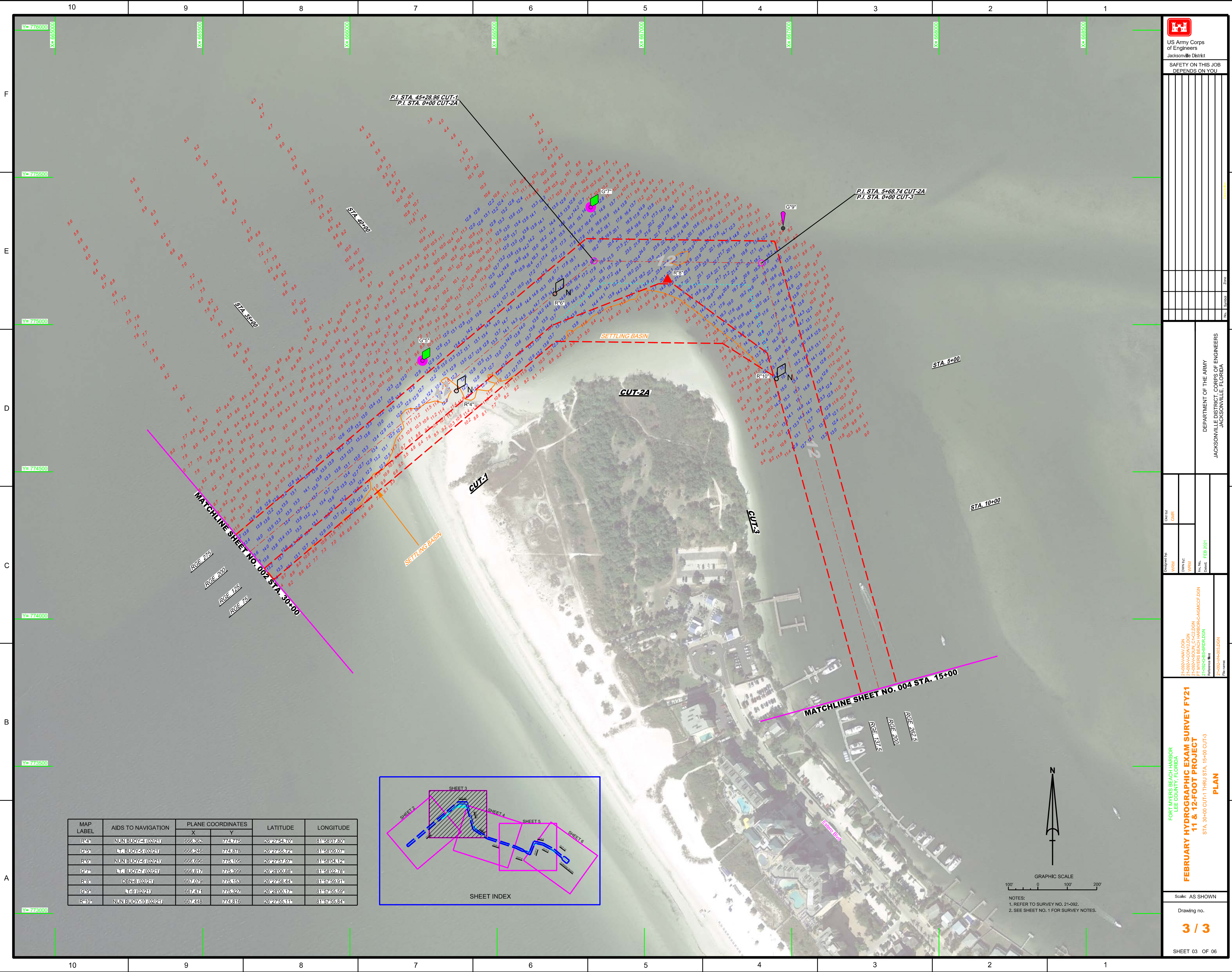
---

SHEET 01 OF 06

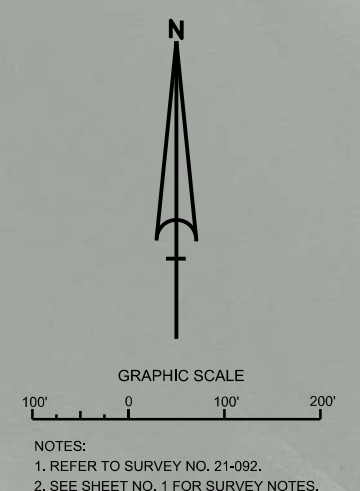
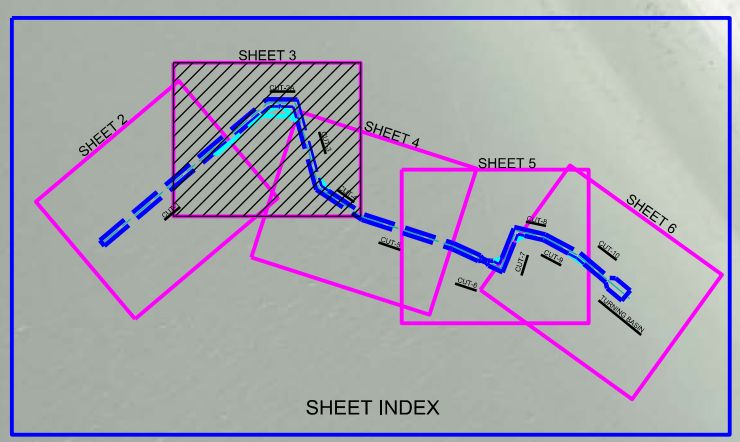


SHEET INDEX





MAP LABEL	AIDS TO NAVIGATION	PLANE COORDINATES		LATITUDE	LONGITUDE
		X	Y		
R4*	NUN BUOY-4 (02/21)	666.362	774775	26°27'54.70"	81°58'07.80"
G6*	Lt. BUOY-6 (02/21)	666.246	774876	26°27'55.72"	81°58'09.07"
R6*	NUN BUOY-3 (02/21)	666.695	775105	26°27'57.97"	81°58'04.12"
G7*	Lt. BUOY-7 (02/21)	666.817	775399	26°28'00.88"	81°58'02.78"
R8*	DBN-8 (02/21)	667.079	775453	26°27'58.45"	81°57'59.91"
G9*	Lt-9 (02/21)	667.474	775327	26°28'00.17"	81°57'55.59"
R10*	NUN BUOY-10 (02/21)	667.448	774816	26°27'55.11"	81°57'55.84"



DEPARTMENT OF THE ARMY  
JACKSONVILLE DISTRICT, CORPS OF ENGINEERS  
JACKSONVILLE, FLORIDA

Designed by: WRM  
Checked by: GHR  
Drawn by: WRM  
Reviewed by: FT MYERS BEACH HARBOR-C-NMCCFDDN  
Reference files: 21-092A-HARBOR, 21-092A-HARBOLDGN

**FEBRUARY HYDROGRAPHIC EXAM SURVEY FY21  
11 & 12-FOOT PROJECT**  
PLAN  
STA. 30+00 CUT-1 THRU STA. 15+00 CUT-3

Scale: AS SHOWN  
Drawing no.  
**3 / 3**  
SHEET 03 OF 06